

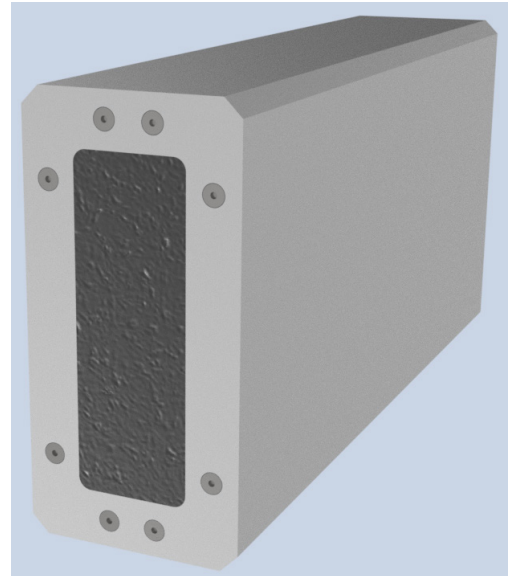
ALTO-DCDC



This module has the following features:

- *BiDi 12V-48V DC/DC converter*
- *BiDi regulation*
- Wide charge/discharge temperature range
- Light weight
- Truly modular and portable

With our patented¹ cableless magnetic inter-connect you don't need any tools, insert away, the magnets take care of the rest



<i>Model</i>	<i>ALTO-DCDC-1248</i>
Voltage	12VDC - 48VDC (9.8V _{MIN} to 16V _{MAX}) - (40V _{MIN} to 56V _{MAX})
Power Flow	600W
Direction	<i>BiDi Regulated</i>
MAX continuous Charge/Discharge rate	600W
Charge/Discharge Temperature	-22° to 122° F (-30° to 50° C)
Storage Temperature	-40° to 140° F (-40° to 60° C)
Warranty ²	10 Years
Module Dimensions ³	2.75" x 5.5" x 11.5" (7 x 14 x 26 cm)
Weight per module ³	8 lb
Assembly	NoWire

¹ Patent #: US 9,907,195 B2

² Please contact our sales for details on extending your warranty to 25 years

³ We reserve the rights to modify any of the specifications